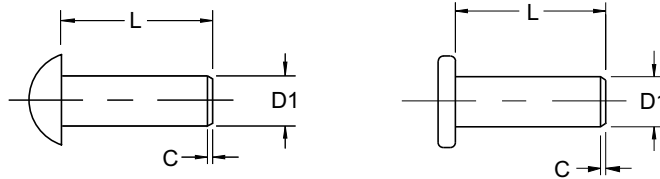


SPIROL® PRE-DESIGNED SPECIALS

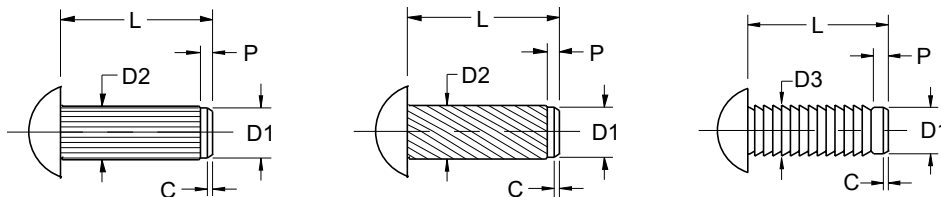
SPIROL® Headed Straight Pins and Round Headed Drive Studs are pre-designed products made to order. Our **headed straight pins** are produced with the same uniformity and high CPK as our Series DP100 straight pins. Headed pins are used as axles or hinge pins when movement in one direction must be limited. **Round headed drive studs** are alternatives to our flat headed standards shown on page 3.

Headed Straight Pins Series H100 Series H200



Round Headed Drive Studs

Series HP100 Series HP110 Series HP120



Stud Size	INCH SPECIFICATIONS											METRIC SPECIFICATIONS								
	#0	#2	#4	#6	#7	#8	#10	#12	#14	#16	1.4	1.6	2	2.5	3	4	5	6		
Diameter "D1"	Min. .065 Max. .067	.084 .086	.102 .104	.118 .120	.134 .136	.142 .144	.159 .161	.194 .196	.219 .221	.248 .250	Min. 1.35 Max. 1.4	1.55 1.6	1.95 2	2.45 2.5	2.95 3	3.95 4	4.95 5	5.95 6		
Diameter "D2"	Min. .072 Max. .076	.093 .097	.112 .116	.129 .133	.145 .149	.154 .158	.171 .175	.205 .209	.230 .234	.259 .263	Min. 1.53 Max. 1.63	1.73 1.83	2.20 2.30	2.70 2.80	3.25 3.35	4.25 4.35	5.25 5.35	6.25 6.35		
Diameter "D3"	Min. .077 Max. .081	.096 .100	.118 .123	.134 .139	.150 .155	.158 .163	.175 .180	.210 .215	.235 .240	.264 .270	Min. 1.60 Max. 1.70	1.80 1.90	2.36 2.46	2.86 2.96	3.36 3.46	4.36 4.46	5.36 5.46	6.36 6.46		
Head Diameter	Min. .120 Max. .130	.146 .162	.193 .211	.240 .260	.267 .285	.287 .309	.334 .359	.382 .408	.429 .457	.443 .472	Min. 2.20 Max. 2.60	2.60 3.00	3.30 3.70	4.20 4.60	4.95 5.45	6.75 7.25	8.50 9.10	10.2 10.8		
Round Head Thickness	Min. .040 Max. .050	.059 .070	.075 .086	.091 .103	.099 .111	.107 .119	.124 .136	.140 .152	.156 .169	.161 .174	Min. 0.70 Max. 0.90	0.90 1.10	1.10 1.30	1.40 1.60	1.65 1.95	2.25 2.55	2.85 3.15	3.45 3.75		
Flat Head Thickness	Min. .017 Max. .027	.024 .035	.030 .041	.034 .046	.039 .051	.042 .054	.048 .060	.059 .071	.068 .081	.077 .090	Min. 0.35 Max. 0.55	0.45 0.65	0.55 0.75	0.70 0.90	0.90 1.20	1.20 1.50	1.50 1.80	1.90 2.20		
Chamfer "C"	Min. .005	.005	.005	.005	.005	.005	.016	.016	.016	.016	Min. 0.15	0.15	0.15	0.15	0.15	0.4	0.4	0.4		
Pilot Length "P"	Ref. .031	.031	.031	.031	.062	.062	.062	.062	.062	.062	Ref. 1	1	1	1	1	2	2	2		
Pin Length "L"	.187 to .625	.188 to .875	.188 to 1.000	.250 to 1.250	.250 to 1.500	.312 to 1.500	.375 to 1.500	.375 to 1.500	.500 to 2.000	.500 to 2.250	.500 to 2.500	5 to 16	5 to 16	5 to 20	5 to 26	6 to 30	8 to 40	8 to 50	10 to 60	
Stud Length "L"	.187 to .312	.250 to .375	.250 to .375	.312 to .500	.375 to .625	.375 to .625	.500 to .750	.500 to .750	.625 to .750	.625 to .750	5 to 8	5 to 8	6 to 10	6 to 10	8 to 12	10 to 16	12 to 20	16 to 20		
	Length Tolerance ± .010											Length Tolerance ± 0.25								
Rec. Drill Size		51	44	37	31	29	27	20	9	2	1/4		1.4	1.6	2.0	2.5	3.0	4.0	5.0	6.0
Recommended Hole	Min. .0670 Max. .0686	.0860 .0877	.1040 .1059	.1200 .1220	.1360 .1382	.1440 .1463	.1610 .1636	.1960 .1990	.2210 .2240	.2500 .2534	Min. 1.4 Max. 1.46	1.6 1.66	2.0 2.06	2.5 2.56	3.0 3.06	4.0 4.08	5.0 5.08	6.0 6.08		

- ⊙ These recommended hole diameters are for the Round Headed Drive Studs. The recommended hole diameters for the Headed Straight Pins will vary depending on the host material. Contact Spirol's Application Engineering Department for a recommended hole based on your specific application.
- ⊙ Recommended material: Low Carbon Steel (F) and Austenitic Stainless Steel (D).
- ⊙ Dimensions apply before plating.

Part Number Code

TO ORDER: SLDP (Pin/Stud Size)x(Length)(Material)(Finish)(Pin/Stud Series Number)
 EXAMPLE: SLDP #12 x .625 FK HP110

SPIROL®

Innovative fastening solutions.
Lower assembly costs.



U.S.A. Spirol International Corporation
30 Rock Avenue
Danielson, Connecticut 06239
Tel. +1 860.774.8571
Fax. +1 860.774.2048
(US Distributors: Fax. +1 860.774.0487)

**Spirol International Corporation
Shim Division**
321 Remington Road
Stow, Ohio 44224
Tel. +1 330.920.3655
Fax. +1 330.920.3659

Spirol West Inc.
1950 Compton Avenue, Unit 111
Corona, California 92881-6471
Tel. +1 951.273.5900
Fax. +1 951.273.5907

Canada Spirol Industries, Ltd.
3103 St. Etienne Boulevard
Windsor, Ontario
Canada N8W 5B1
Tel. +1 519.974.3334
Fax. +1 519.974.6550

Mexico Spirol México, S.A. de C.V.
Carretera a Laredo KM 16.5 Interior E
Col. Moisés Saenz
Apodaca, N.L. 66613 México
ó Apdo. Postal 151 de Apodaca, N.L.
Tel. +52 81 8385 4390
Fax. +52 81 8385 4391

Europe Spirol Industries, Ltd.
Princewood Road
Corby, Northants
NN17 4ET United Kingdom
Tel. +44 1536 444800
Fax. +44 1536 203415
(UK Distributors: Tel. 0800 3890034)

Spirol SAS
Rue Henri Rol Tanguy
Z.A. Les Naux
51450 Bétheny - Reims
France
Tel. +33 3 26 36 31 42
Fax. +33 3 26 09 19 76

Spirol GmbH
Brienner Strasse 9
80333 Munich
Germany
Tel. +49 931 454 670 74
Fax. +49 931 454 670 75

Spirol SAS en España
08940 Cornellà de Llobregat
Barcelona
Spain
Tel. +34 93 193 05 32
Fax. +34 93 193 25 43

Spirol S.A.S., organizační složka
Sokola Tůmy 743/16
Ostrava-Miriánské Hory 70900
Czech Republic
Tel/Fax. +420 417 537 979

Asia Pacific Spirol International Engineered
Fastener Trading Co. Ltd.
No. 11 Xi Ya Rd. North
Section A, 1F, Building 14
Wai Gao Qiao Free Trade Zone
Shanghai, China 200131
Tel. +86 21 5046-1451/1452
Fax. +86 21 5046-1540

e-mail: info@spirol.com

SPIROL.com

Challenge Us!

SPIROL Application Engineers will review your application needs and work with your design team to recommend the best solution. One way to start the process is to visit our **Optimal Application Engineering** portal at www.SPIROL.com.